

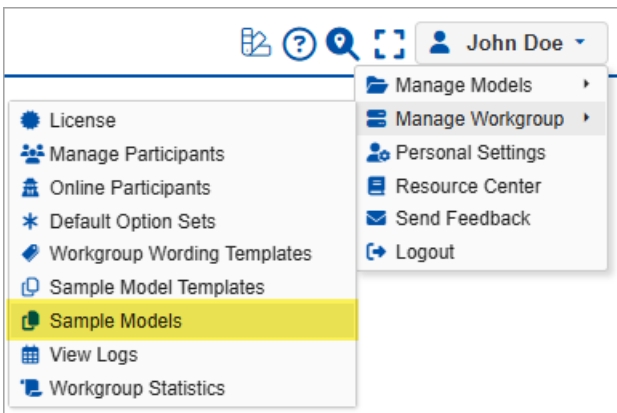
# Add Comparion Sample Models to Workgroup

Comparion offers a variety of Sample Models and **Templates** to help you get started building your model or familiarize yourself with the software

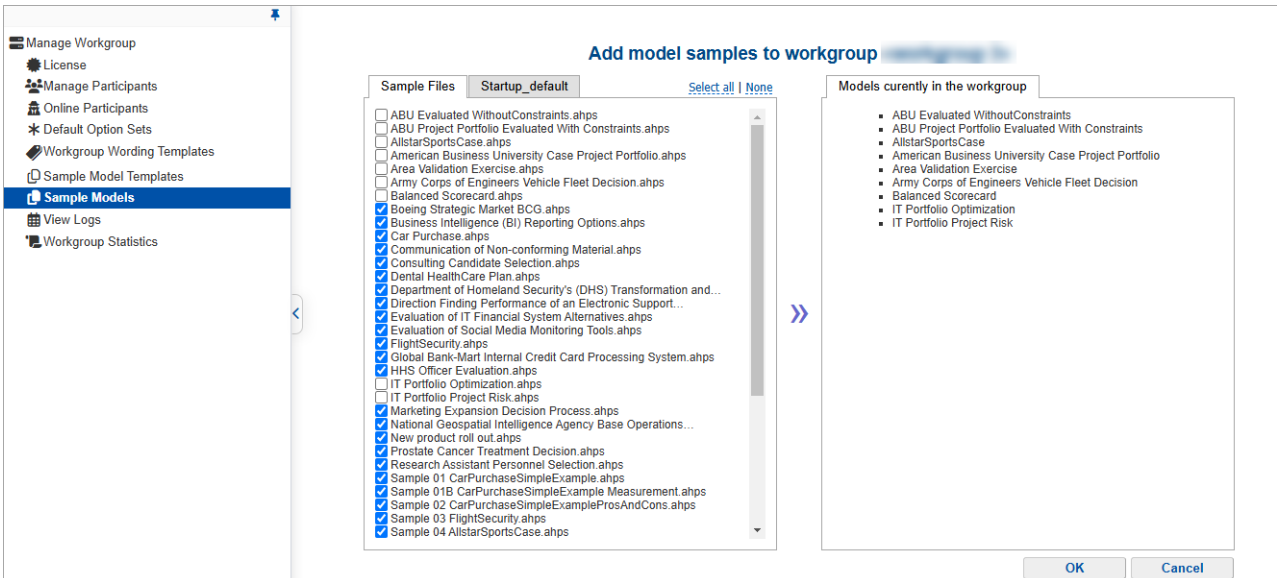
You can also download the **Sample Models** from the **Resource Center**, and upload them to your workgroup using the **Create New Model From File** option.

As a **Workgroup Manager**, you can add these sample models to your workgroup.

Click your User name > Manage Workgroup > Sample Models Models.



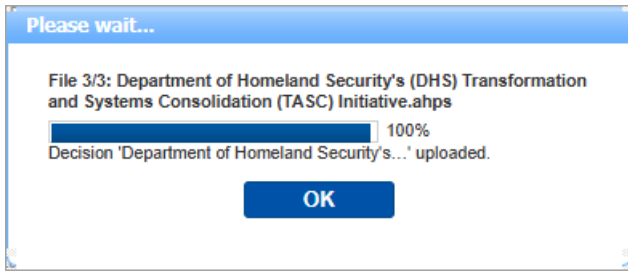
Comparion Sample Models are listed on the left panel and existing models in your workgroup are on the right.



Sample Models that are not yet added to your workgroup are automatically checked as displayed above.

You can select/unselect models as desired. Once done, click **>>** to add the selected to your workgroup.

A dialog pop-out shows the progress. Once all the selected models are uploaded, click OK.



The added Sample Templates will be included on the Models list Models tab.

<span>Models</span> <span>Archives</span> <span>Templates</span> <span>Deleted</span> <span>New Model</span> <span>New from Template</span> <span>New from File</span>		
Drag a column header here to group by that column		
<input type="checkbox"/>	★	Model name
<input type="checkbox"/>	☆	▸ Department of Homeland Security's (DHS) Transformation and Systems Consolidation (TASC) Initiative
<input type="checkbox"/>	☆	▸ Consulting Candidate Selection
<input type="checkbox"/>	☆	▸ Car Purchase
<input type="checkbox"/>	☆	▸ Communication of Non-conforming Material
<input type="checkbox"/>	☆	▸ Car Purchase
<input type="checkbox"/>	☆	▸ Business Intelligence (BI) Reporting Options
<input type="checkbox"/>	☆	▸ Boeing Strategic Market BCG
<input type="checkbox"/>	☆	▸ IT Portfolio Project Risk
<input type="checkbox"/>	☆	▸ IT Portfolio Optimization
<input type="checkbox"/>	☆	▸ Area Validation Exercise
<input type="checkbox"/>	☆	▸ AllstarSportsCase
<input type="checkbox"/>	☆	▸ Balanced Scorecard
<input type="checkbox"/>	☆	▸ Army Corps of Engineers Vehicle Fleet Decision
<input type="checkbox"/>	☆	▸ American Business University Case Project Portfolio
<input type="checkbox"/>	☆	▸ ABU Project Portfolio Evaluated With Constraints
<input type="checkbox"/>	☆	▸ ABU Evaluated WithoutConstraints

You can also download the **Sample Models** from the **Resource Center**, and upload them to your workgroup using the **Create New Model From File** option.